

Load base (rubber foot) with mounting flange and ball-shaped head



Description

The mounting parts for load cells and force transducers are so designed that the application of the force to the load cell or force transducer is done in an optimum way. The load foot with flange AZK01X722 is an excellent technical and economic solution and combines the advantages of the known load foot AZK01X720 with an additional assembly flange and is therefore especially suitable for container balances, floor units and mobile balances.

If necessary the height can be adjusted by inserting shims.

Features

- Load input with pocket hole
- For capacities from 90 kg up to 10,000 kg
- Low installation height
- Ease of assembly
- Height adjustable by turning the rubber element
- Approved for weighing machines that are appropriate for verification

Accessories

- Sealing plate

Applications

- Suitable for container weighing machines, ground installation and movable weighing machines
- Can be used with force transducers of the models F3270, F3271 and F3272

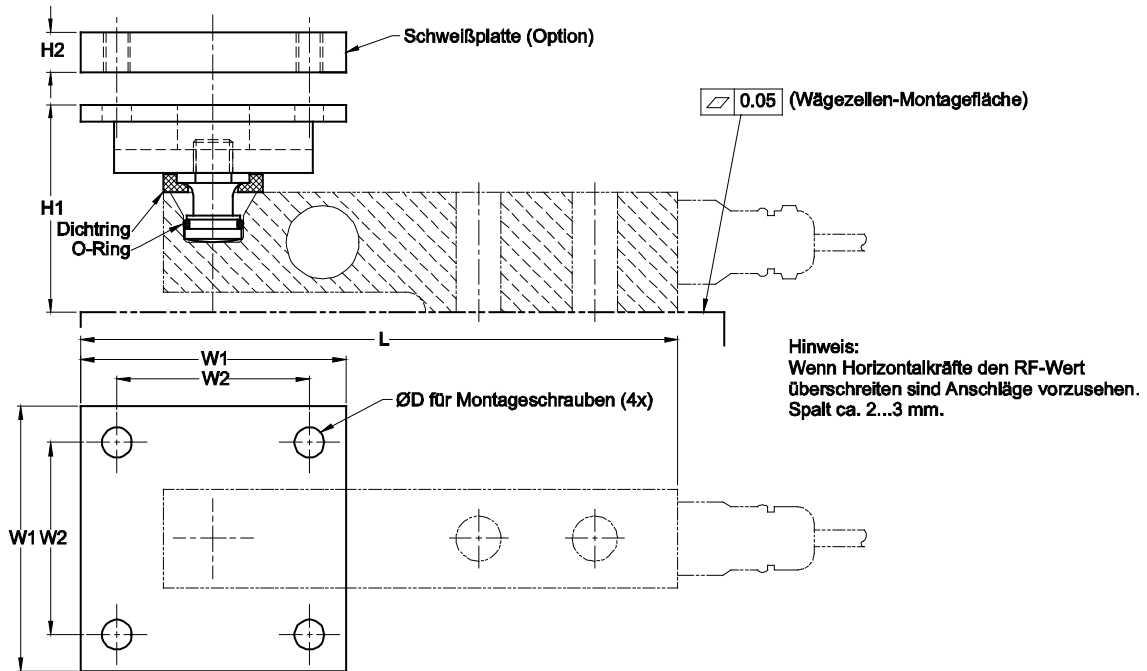
Material

- Stainless steel

Model: AZK01X722

Dimension

with F3271 and F3272



| Force transducer | Nominal load (kg) | Dimensions (mm) | | | | | | | |
|-----------------------------|-------------------|-----------------|-----|----|-----|----|-----|---------------------|--------|
| | | L | H1 | H2 | W1 | W2 | D | S _{max} ** | RF*** |
| F3271 - 5 kN/10 kN/20 kN | 510/1020/2039 | 180 | 63 | 12 | 80 | 58 | M8 | 5 mm | 1600 N |
| F3271 - 50 kN | 5099 | 219 | 78 | 12 | 100 | 76 | M10 | 5 mm | 5000 N |
| F3272 - 500 lb | 227 | 154 | 54 | 6 | 60 | 44 | M6 | 6 mm | 700 N |
| F3271 - 100 kN | 10197 | 275 | 108 | 20 | 120 | 90 | M12 | 5 mm | 7000 N |
| F3272 - 1 klb/2.5 klb/5 klb | 454/1134/2268 | 164 | 60* | 12 | 80 | 58 | M8 | 5 mm | 1600 N |
| F3270 - 200 lb/500 lb | 91/227 | 154 | 55* | 6 | 60 | 44 | M6 | 6 mm | 700 N |
| F3270 -1 klb/2.5 klb/5 klb | 454/1134/2268 | 164 | 59* | 12 | 80 | 58 | M8 | 5 mm | 1600 N |

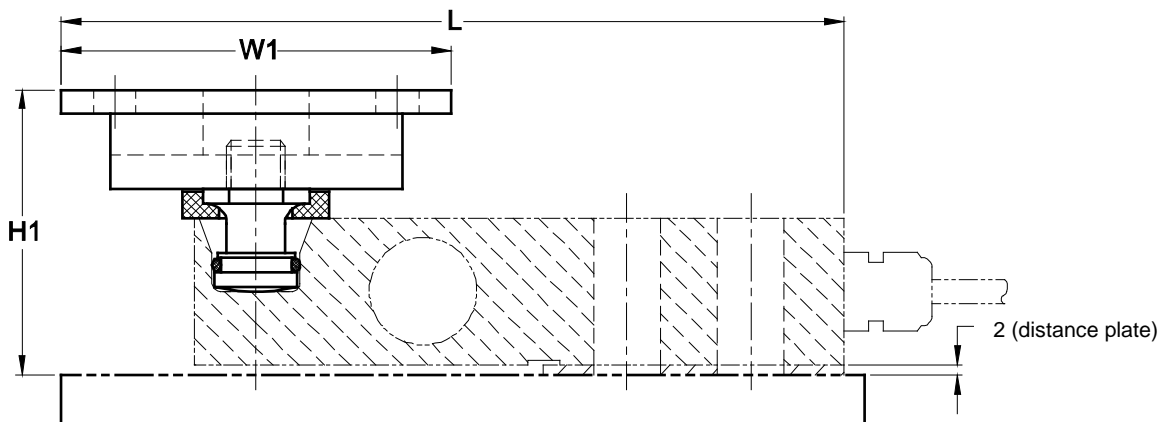
** S_m

*Inclusive distance plate

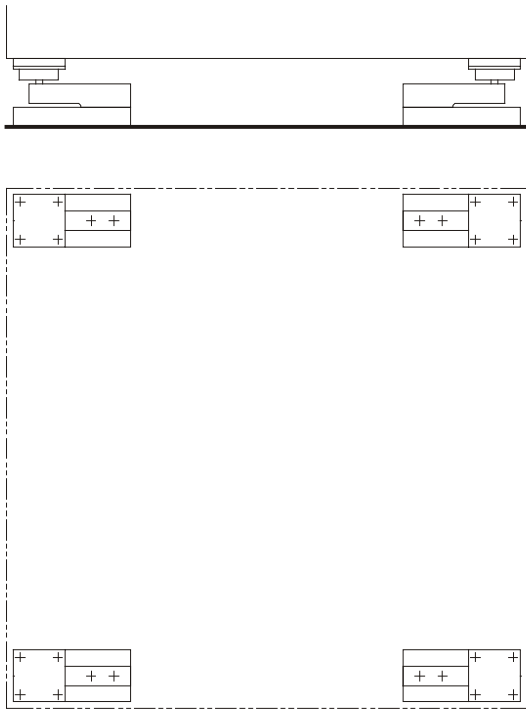
**S_{max}: Maximum of tolerable horizontal load input offset

*** Reset force at S_{max}

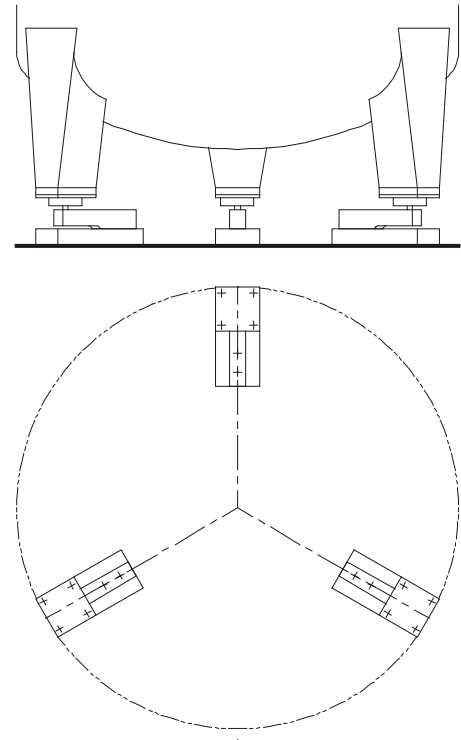
Details with F3270



Examples



Platform scale with 4 load cells



Tank weighing system with 3 load cells